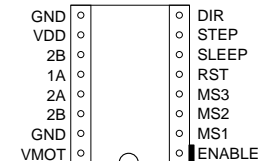
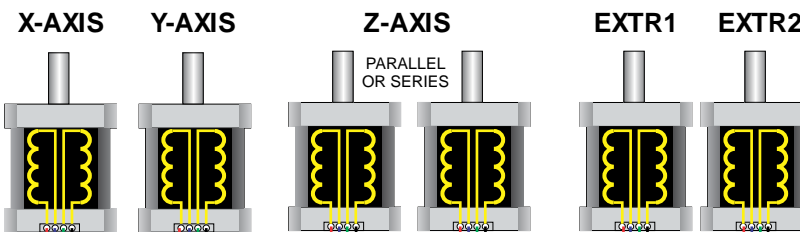


# AZTEEG X3 3DP 3D PRINTER CONTROLLER WIRING DIAGRAM

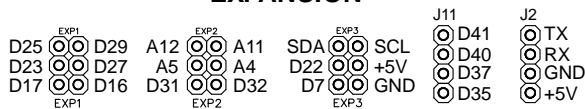
## STEPPER MOTORS



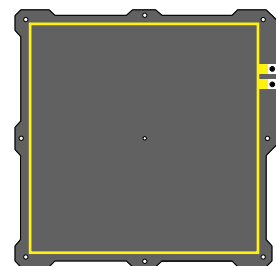
### BASIC SETTINGS

SELECT ARDUINO MEGA 2560 on Arduino IDE  
SELECT MOTHERBOARD 33 or 34 on Marlin, Repetier or Sprinter

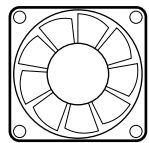
### EXPANSION



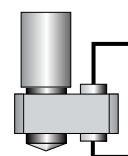
**POWER INPUT**  
PC POWER SUPPLY OR  
AC/DC SWITCHING PS  
12-24VDC



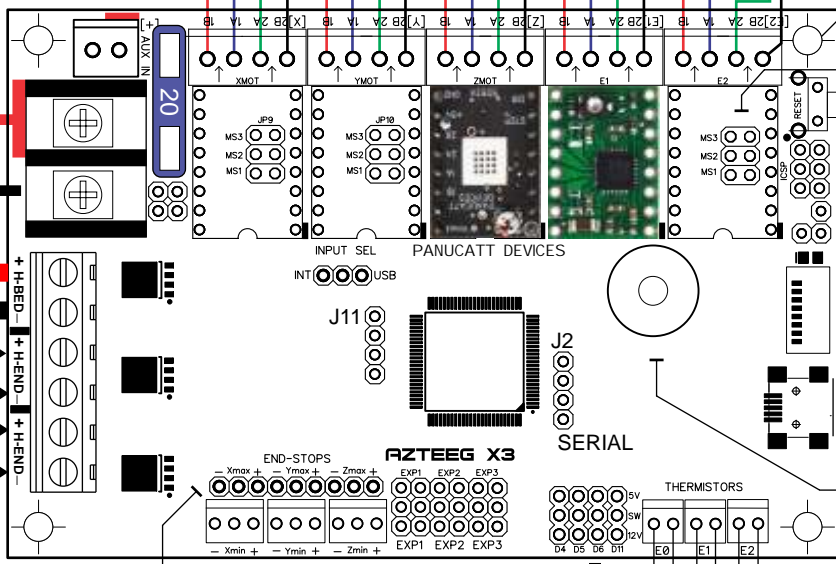
HEATED BED



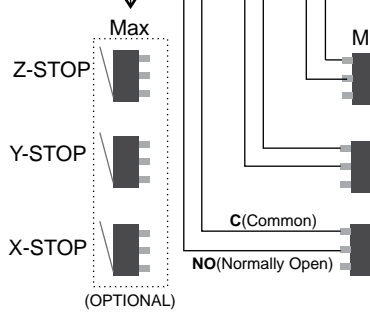
FAN OR 2ND HOT-END



HOT-END

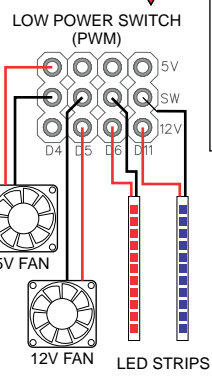


- 0.15in #6-32 X 4
- STEP SIZE SELECTOR
- RESET
- ICSP
- ATX PWR
- SD ACTIVITY LED
- microSD (TransFlash)
- USB PORT MINI B
- BUZZER



### ENDSTOPS

Location of C and NO on switch may vary. Check markings.

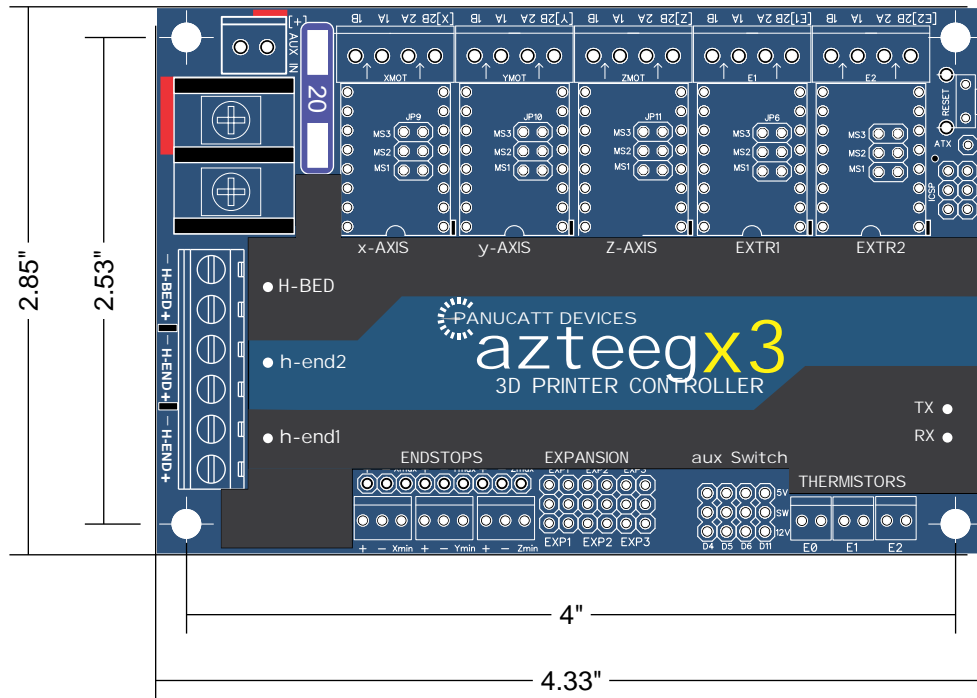


### THERMISTORS

AZTEEG X3 3DP CONTROLLER  
WWW.PANUCATT.COM



# AZTEEG X3 3DP 3d pRINTER CONTROLLER WIRING DIAGRAM



AZTEEG X3 3DP CONTROLLER  
WWW.PANUCATT.COM

reprap.org/wiki/Azteeg\_X3

